

**New!**

## Armor Max Plus™ Windows—

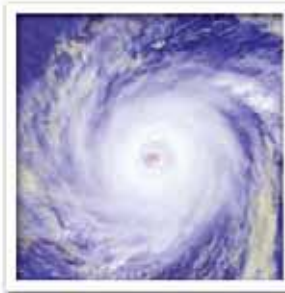
Maximum Impact Protection and So Much More

Exceptional hurricane protection, beauty, energy efficiency, security, safety and sound reduction.

**Gorell**<sup>®</sup>  
WINDOWS & DOORS



# Introducing America's Toughest, Prettiest and Most Versatile Hurricane Impact Windows.



For discerning homeowners who accept only the best for their homes—and need protection from violent weather—Gorell offers its new Armor Max Plus™ line of impact windows. As beautiful as they are strong, these Level “D” hurricane windows also provide cost-saving energy efficiency, outstanding protection against intrusion, significant sound reduction and greater safety.

Unlike other hurricane windows that are patched together from old designs, Armor Max Plus impact windows were specifically designed to give you the protection you need and the beauty and ease of use you deserve. They have been specially engineered to protect your home and loved ones from violent weather year round. Having easily passed all ASTM Large Missile Impact Level “D” tests, Armor Max Plus windows can be installed anywhere, even right on the coastline.



These rugged, heavy-duty impact windows provide “continuous” hurricane protection because they require no preparation as violent weather approaches. Just close and lock them. Unlike shutters or boarded-up windows, they allow natural daylight in, making it easier and safer for you to function during power outages.

Gorell is a proud member of the International Hurricane Protection Association.



National ENERGY STAR® Partner of the Year every year since 2004.



Gorell is proud to partner with the National Crime Prevention Council, offering secure, intruder-resistant windows and doors.



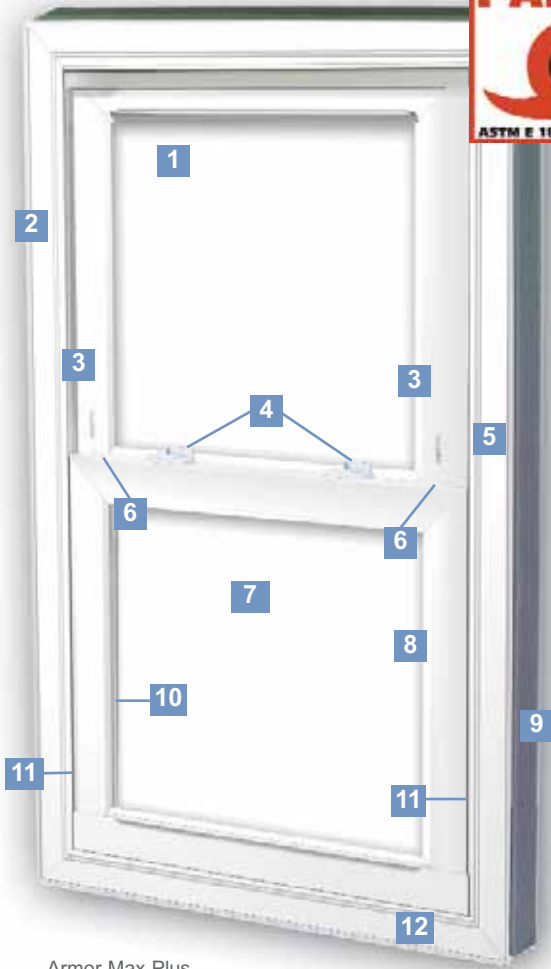


## The Features of Armor Max Plus™ Impact Windows, America's Finest Hurricane Products

1. Armor Max Plus™ Hurricane Glass System—with three panes of glass and a protective laminated interlayer—provides exceptional protection against airborne debris and other dangers from violent weather. The glass is deeply embedded into the frame, offering optimum structural integrity.\*
2. Rigid tubular master frame—with all the corners fused together at high temperatures for extraordinary strength—has 13 separate chambers to improve insulating properties, as well as strength and rigidity. Insulfil™ foam inside the frame chambers enhances thermal performance.
3. New heavy-duty constant force balance system—with stainless steel reinforced attachment points—gives you fingertip operation on even the largest of double-hung models.\*
4. Two heavy-duty cam sweep locks hold sashes in place during violent weather and will also keep your home safer and more secure. From the outside looking in, they cannot be seen, which gives your windows a more attractive appearance.
5. Soft white vinyl—clear through—complements practically any architectural style and is pleasing to the eye.
6. Zamac 3 zinc-aluminum tilt latches on double-hung models also help keep sashes secure during violent weather, yet let you tilt in sashes easily to make cleaning a breeze.
7. Gorell's high-performance Low-E coating and argon gas between the glass panes ensure that Armor Max Plus impact windows help lower home energy costs and make your home more comfortable.\*
8. Automotive-type window glazing creates a super-tight seal.\*
9. Insulating foam wrap around the frame significantly reduces the possibility of drafts.

*\* Feature not visible in photograph.*





Armor Max Plus  
Double-Hung Model

#### OTHER HURRICANE PRODUCTS FROM GORELL

Armor Impact Plus™ (AIP) windows offer Level “C” hurricane protection and are available for both replacement and new-construction applications.

Gorell's 6400 Series sliding patio doors are DP-50 rated and are also tested and approved for Large Missile Impact.



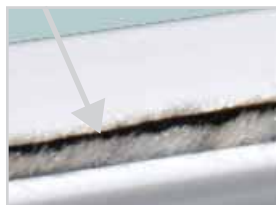
New!



**10.** PPG Intercept® warm-edge spacer system reduces energy loss through the glass.



**11.** Special double weather stripping seals out drafts and dust and improves insulation and window performance.



**12.** Distinctive dual millwork lines on the interior master frame provide a look of handcrafted molding.



## PROTECTION AND PEACE OF MIND



Armor Max Plus™ impact windows provide fortress-like protection against intrusion. A nearly impenetrable PVB interlayer, three panes of glass that are deeply embedded into the frames, rigid tubular master frames and superior locking hardware combine to do what alarm systems can't—keep bad guys from getting into your home.

## PEACE AND QUIET

You'll appreciate the sound-reducing qualities that Armor Max Plus impact windows provide. Their specially engineered heavy-duty glass system creates a formidable barrier to outside noise. These products provide you with a level of peace and quiet you've never experienced before.



## COMFORT AND ENERGY SAVINGS

Like all Gorell products, Armor Max Plus impact windows are engineered for optimal thermal performance. Because they are so highly energy efficient, they help to lower your energy bills and keep temperatures constant throughout your home so that you can enjoy a more comfortable living environment.

## DISTINCTION AND CURB APPEAL

In designing Armor Max Plus products, Gorell engineers were challenged to design windows that are as beautiful as they are strong. These windows feature a distinctive profile that's accentuated by elegant dual millwork lines. You can even customize them to your liking by selecting from a number of design options—such as contoured internal grids and color vinyl finishes.

## SAFE AT HOME

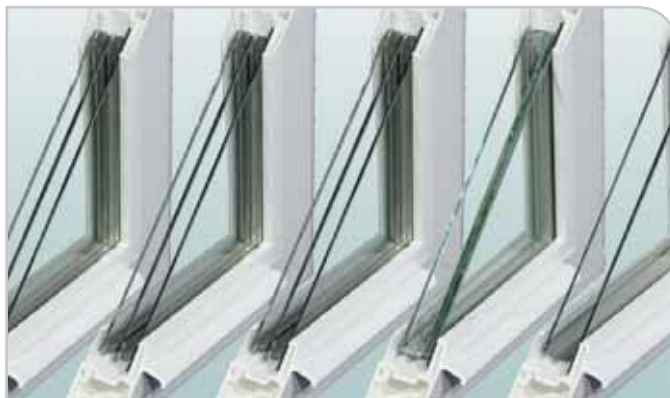
Armor Max Plus impact windows give new meaning to "safety glass." Normal tempered safety glass breaks into small pieces when even accidentally struck with a sharp or large object. The glass in Armor Max Plus windows is so resilient that objects typically bounce off of it. When struck with a sharp object, the glass may crack, but it stays intact to continually protect your home.



### HIGH-PERFORMANCE GLASS SYSTEMS

Gorell offers numerous high-performance Low-E glass systems that provide you with precisely the level of comfort, thermal performance, security, sound deadening and UV protection you want. These glass options are available on Gorell's 5400 Series products, a model similar to Armor Max Plus products.

5400 Series windows are extremely strong. They can be used in areas that require a DP-50 rating for high wind and water performance but do not require impact glass. Practically all 5400 Series windows that incorporate one of Gorell's high-performance glass systems qualify for the ENERGY STAR label.



### BETTERVUE™ SCREENS

These unique screens will give you a sharper view of the outdoors—and the added airflow you'll get for ventilation is almost like having no screen at all!



### INTERNAL GRIDS

Finely detailed contoured internal grids give windows the look of divided lites—yet allow for easy window cleaning because they're encapsulated between the glass panes.



### WINDOW STYLES AND CONFIGURATIONS

Armor Max Plus hurricane products are available in several styles, including double-hung, horizontally sliding windows and picture window models.



### SOLARSHINE™

This specialty glass keeps the exterior of your new windows looking clean longer because, remarkably, it uses the sun's rays to loosen and break down dirt from its ultra-smooth surface.



## Give Your Home Its Own Unique Look.

With Armor Max Plus™ impact windows, beauty isn't sacrificed for strength and durability. These windows feature a distinctive profile that's accentuated by dual millwork lines. You can further "customize" them by selecting from a number of design options.

### COLOR OPTIONS

A palette of beautiful colors is available so that you can coordinate or contrast your windows to the colors of your home—inside and out. You can choose from Soft White or Almond vinyl for the interior. An unlimited array of exterior color options is also available for your new windows. Select one of Gorell's standard exterior colors, or have your windows manufactured in virtually any custom color you request.

#### STANDARD EXTERIOR COLOR OPTIONS



#### INTERIOR OPTIONS



Printed images of colors vary, so please ask your window professional to see actual samples.

**Gorell®**  
**WINDOWS & DOORS**  
[www.gorell.com](http://www.gorell.com)